

Courtyards of Terrell Mill Rd.

1355 Terrell Mill Rd.

**For Lease**

## Project Overview

**1,000 to 1,750 Sq.Ft. per Floor**

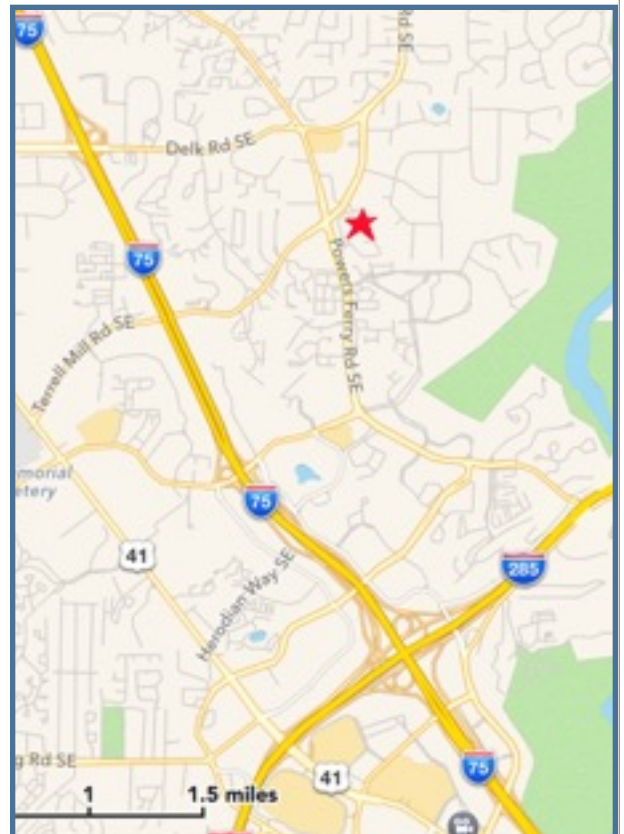
### **Building 1474**

Offer is for up to 1,750 square feet, in a two story, multi tenant office building in the Northwest Corridor of Marietta, GA. The building is in excellent condition.

The property's location is exemplary. It is part of the Courtyards of Terrell Mill Rd. Office Park adjacent to the intersection of Powers Ferry Rd. Terrell Mill Rd. The address is situated in one of Atlanta's most established primary office sub-markets.

The building is a two story, steel frame structure with a brick exterior and thermal pane glass curtain wall. The average floor size of 2,750 RSF offers a smaller tenant a much higher glass ratio. It has quality tenants and owners; some that have been there for over fifteen years.

The asking price of **\$545,000.00**. This is a First Class building designed on a smaller scale.



 **ANDERSON BELL**

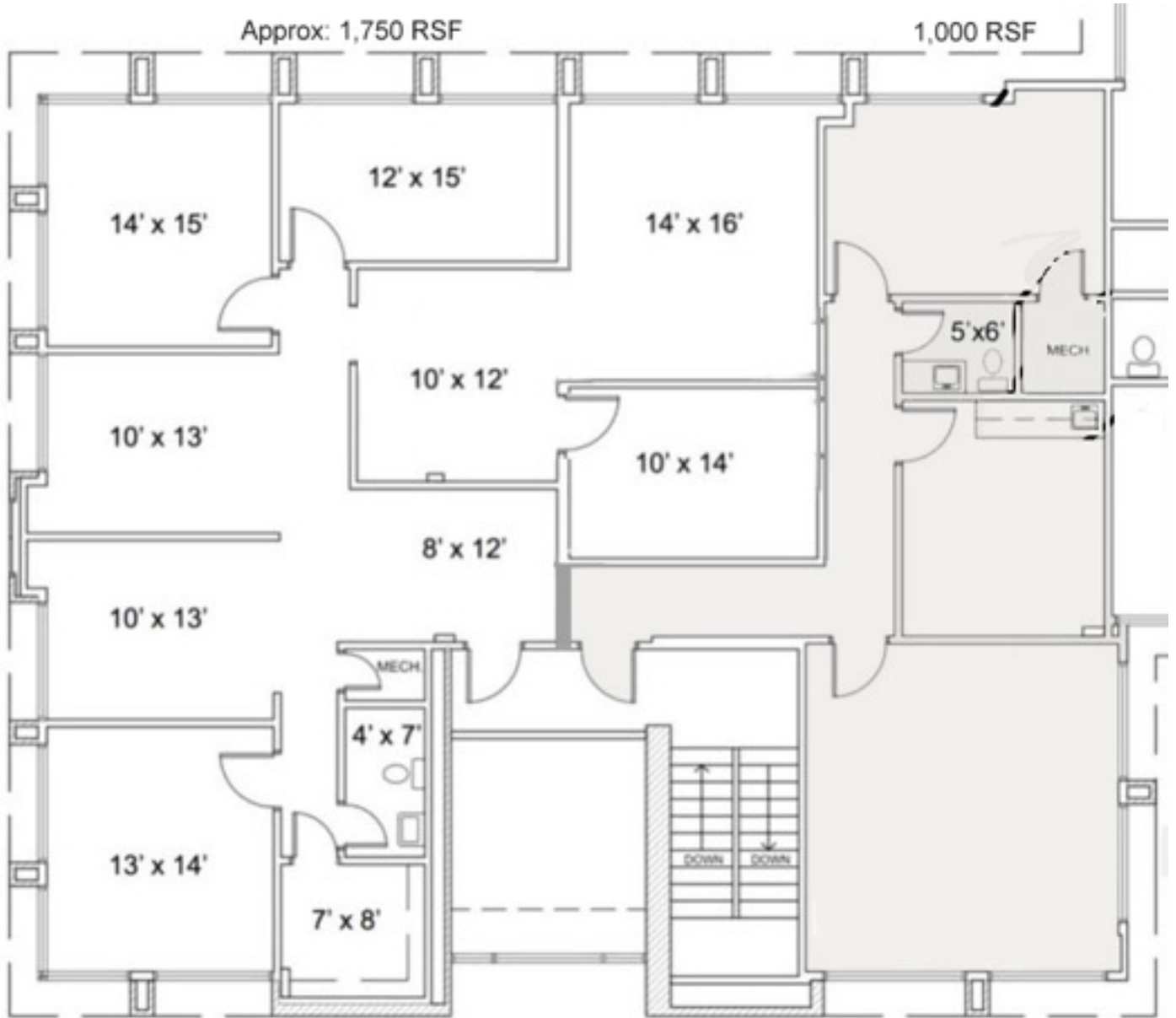
**Andy Bell, CCIM**

andy@andersonbell.com

770.933.9900

[www.andersonbell.com](http://www.andersonbell.com)  
5 Concourse Pkwy Ste 3000 Atlanta, GA 30328

**Building 1474, 2nd Floor**



This information has been secured from sources we believe to be reliable, but we make no representations or warranties, expressed or implied, as to the accuracy of the information. References to square footage or age are approximate. Buyer must verify the information an bears all risk for any inaccuracies. Anderson Bell 2015