

# Galleria 75

# 3200 Cobb Galleria Pkwy

# Sub-Lease

## Building 200

## 4,062 Sq. Ft.

### Project Overview

A 86,000 square foot, two story, multi tenant office project in the Northwest Corridor of Marietta, GA. The building is part of the Cumberland/Galleria Submarket. The address is situated in the heart of one of Atlanta's most established primary office sub-markets.

### Location

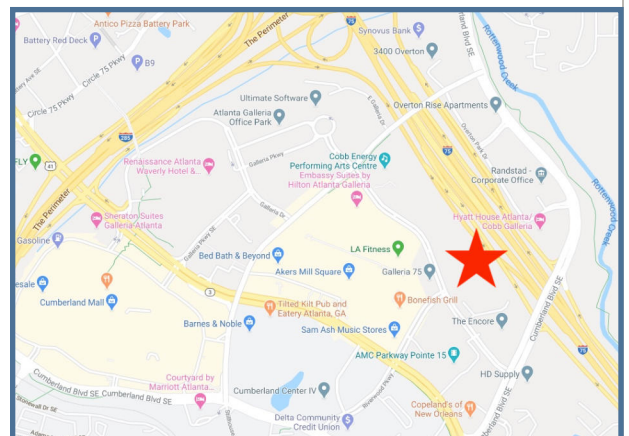
- 3200 Cobb Galleria Parkway,
- Atlanta GA 30339
- Intersection of Cumberland Blvd./I-75
- Northwest Corridor
- Minutes to Truist Park/Braves Stadium
- Walk to restaurants, banks and retail
- Direct access to I-75

### Building Specs

- Free Parking, 5/1000
- Pylon signage available
- Tenant Temperature control

### Space Specs

- 4,062 square feet
- Directory signage available
- Tenant Temperature control



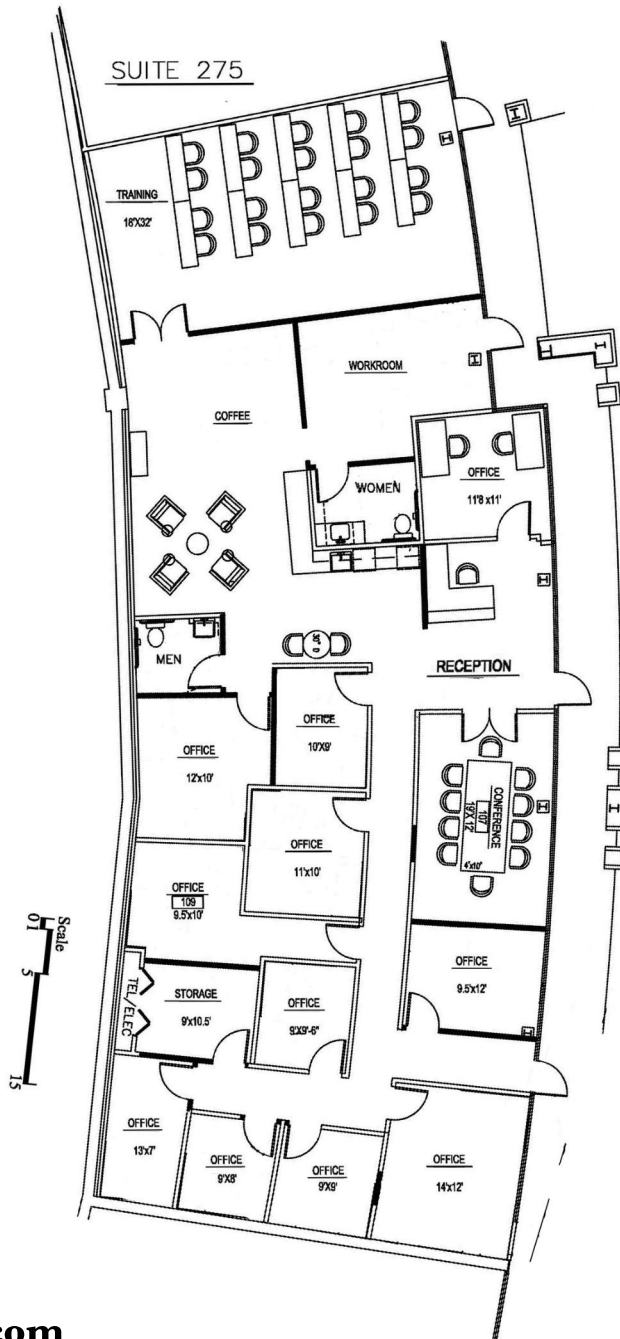
 **ANDERSON BELL**

**Andy Bell, CCIM**  
**andy@andersonbell.com**  
**770.933.9900**

This information has been secured from sources we believe to be reliable, but we make no representations or warranties, expressed or implied, as to the accuracy of the information. References to square footage or age are approximate. Buyer must verify the information and bears all risk for any inaccuracies. Anderson Bell 2015

[www.andersonbell.com](http://www.andersonbell.com)  
5 Concourse Pkwy Ste 3000 Atlanta, GA 30328

**Building 2, 1st Floor, Suite 275, 4,062 Sq. Ft.**



**Andy Bell, CCIM**  
**andy@andersonbell.com**  
**770.933.9900**

This information has been secured from sources we believe to be reliable, but we make no representations or warranties, expressed or implied, as to the accuracy of the information. References to square footage or age are approximate. Buyer must verify the information an bears