

Courtyards of Terrell Mill Rd.

1355 Terrell Mill Rd.

Project Overview

Building 1462

1,550 Sq. Ft. 1st Floor

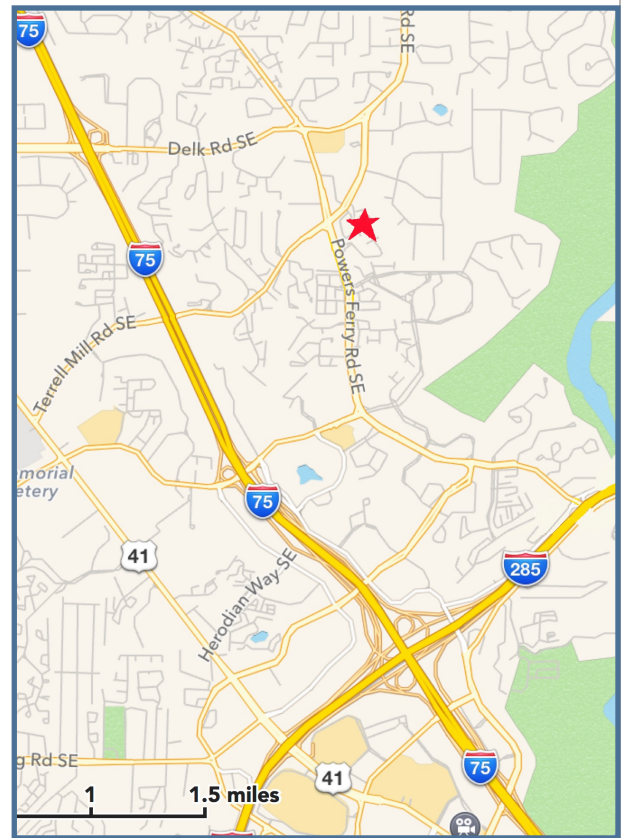
Offer is for a 5,500 square foot, two story, multi tenant office building in the Northwest Corridor of Marietta, GA. The building is in excellent condition.

The property's location is exemplary. It is part of the Courtyards of Terrell Mill Rd. Office Park adjacent to the intersection of Powers Ferry Rd. & Terrell Mill Rd. The address is situated in one of Atlanta's most established primary office sub-markets.

The Courtyards of Terrell Mill Rd. Office Park has a quiet professional setting which includes two fountains with sitting areas, wide sidewalks and a nice walk area around the parking areas for exercise during lunch.

The building is a two story, steel frame structure with a brick exterior and thermal pane glass curtain wall. The average floor size of 2,750 RSF offers a smaller tenant a much higher glass ratio. It has quality tenants and owners; some that have been there for over fifteen years.

A tenant can have pylon signage in front of the building which is the first unit as you enter the project. This is a First Class building designed on a smaller scale.



ANDERSON BELL

Andy Bell, CCIM

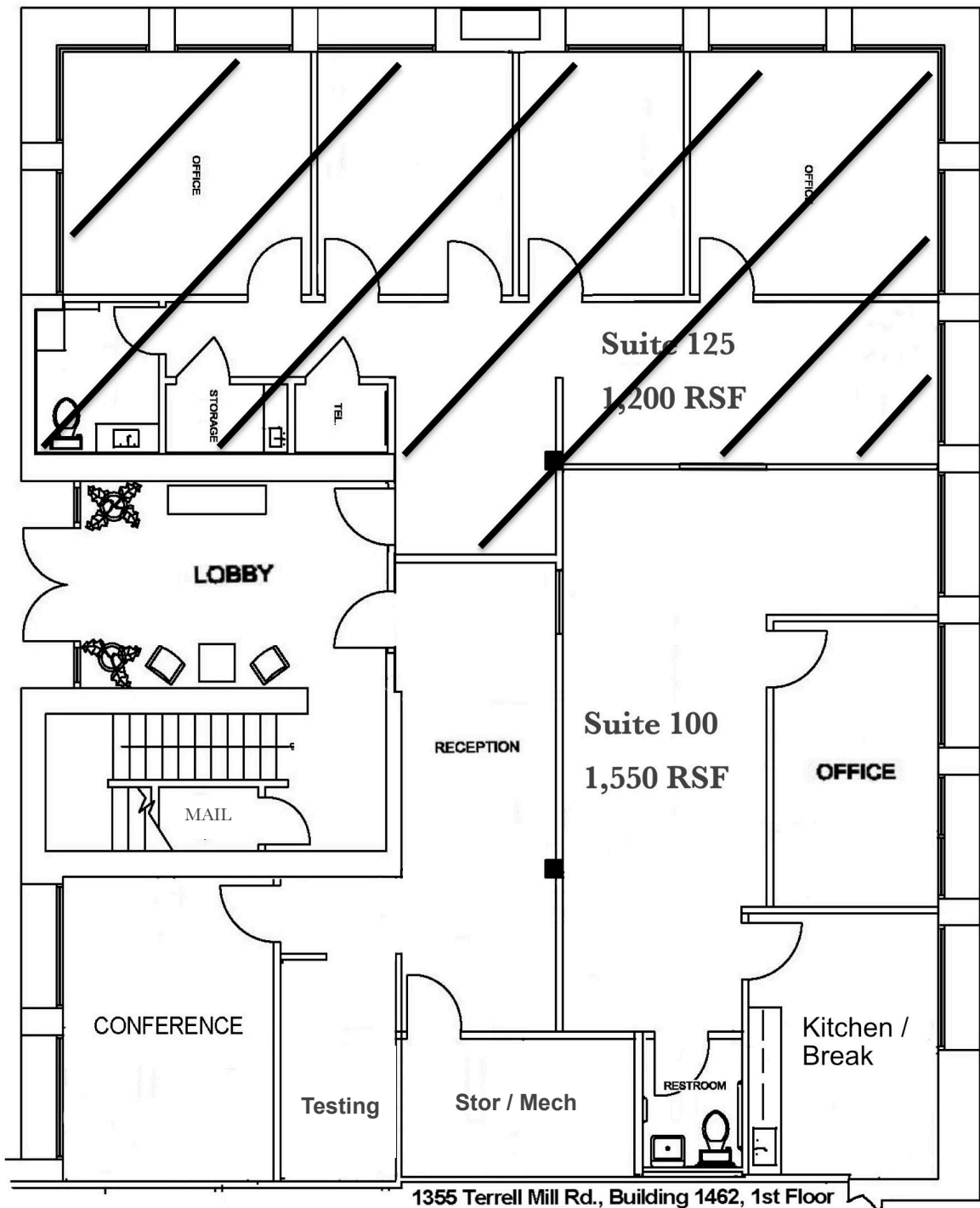
andy@andersonbell.com

770.933.9900

This information has been secured from sources we believe to be reliable, but we make no representations or warranties, expressed or implied, as to the accuracy of the information.

www.andersonbell.com
5 Concourse Pkwy Ste 3000 Atlanta, GA 30328

Building 1462, 1st Floor, 1,550 Sq. Ft.



This information has been secured from sources we believe to be reliable, but we make no representations or warranties, expressed or implied, as to the accuracy of the information. References to square footage or age are approximate. Buyer must verify the information and bears all risk for any inaccuracies. Anderson Bell 2022